

**IL6 Antibody (Center)**  
**Affinity Purified Rabbit Polyclonal Antibody (Pab)**  
**Catalog # AP12474C****Specification**

---

**IL6 Antibody (Center) - Product Information**

Application	WB, IHC-P, FC,E
Primary Accession	<a href="#">P05231</a>
Other Accession	<a href="#">NP_000591.1</a>
Reactivity	Human
Host	Rabbit
Clonality	Polyclonal
Isotype	Rabbit IgG
Calculated MW	23718
Antigen Region	27-55

**IL6 Antibody (Center) - Additional Information****Gene ID** 3569**Other Names**

Interleukin-6, IL-6, B-cell stimulatory factor 2, BSF-2, CTL differentiation factor, CDF, Hybridoma growth factor, Interferon beta-2, IFN-beta-2, IL6, IFNB2

**Target/Specificity**

This IL6 antibody is generated from rabbits immunized with a KLH conjugated synthetic peptide between 27-55 amino acids from the Central region of human IL6.

**Dilution**

WB~~1:1000

IHC-P~~1:10~50

FC~~1:10~50

E~~Use at an assay dependent concentration.

**Format**

Purified polyclonal antibody supplied in PBS with 0.09% (W/V) sodium azide. This antibody is purified through a protein A column, followed by peptide affinity purification.

**Storage**

Maintain refrigerated at 2-8°C for up to 2 weeks. For long term storage store at -20°C in small aliquots to prevent freeze-thaw cycles.

**Precautions**

IL6 Antibody (Center) is for research use only and not for use in diagnostic or therapeutic procedures.

**IL6 Antibody (Center) - Protein Information**

**Name** IL6 ([HGNC:6018](#))

**Synonyms** IFNB2

**Function** Cytokine with a wide variety of biological functions in immunity, tissue regeneration, and metabolism. Binds to IL6R, then the complex associates to the signaling subunit IL6ST/gp130 to trigger the intracellular IL6-signaling pathway (Probable). The interaction with the membrane-bound IL6R and IL6ST stimulates 'classic signaling', whereas the binding of IL6 and soluble IL6R to IL6ST stimulates 'trans- signaling'. Alternatively, 'cluster signaling' occurs when membrane- bound IL6:IL6R complexes on transmitter cells activate IL6ST receptors on neighboring receiver cells (Probable).

**Cellular Location**

Secreted.

**Tissue Location**

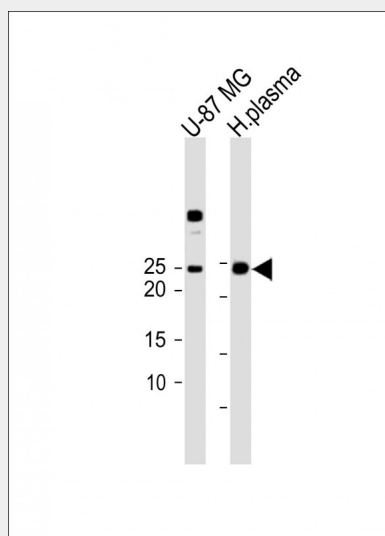
Produced by skeletal muscle.

### IL6 Antibody (Center) - Protocols

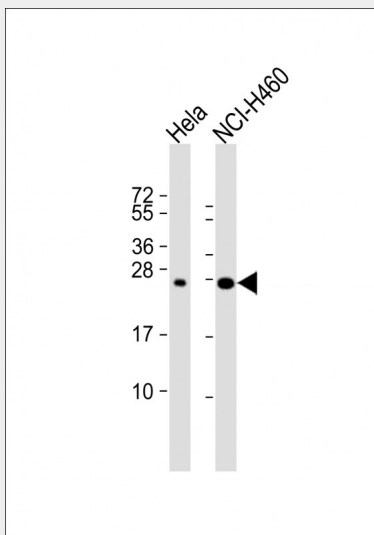
Provided below are standard protocols that you may find useful for product applications.

- [Western Blot](#)
- [Blocking Peptides](#)
- [Dot Blot](#)
- [Immunohistochemistry](#)
- [Immunofluorescence](#)
- [Immunoprecipitation](#)
- [Flow Cytometry](#)
- [Cell Culture](#)

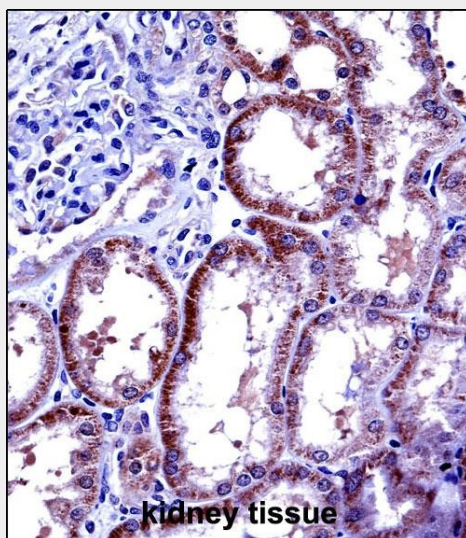
### IL6 Antibody (Center) - Images



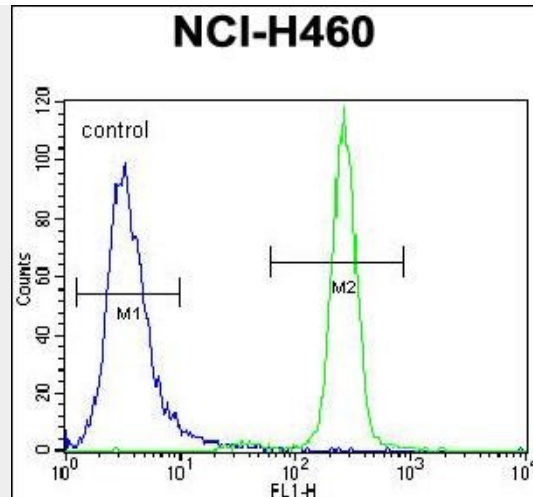
All lanes: Anti-IL6 Antibody (Center) at 1:1000 dilution Lane 1: U-87 MG whole cell lysate Lane 2: Human plasma lysate Lysates/proteins at 20 µg per lane. Secondary Goat Anti-Rabbit IgG, (H+L), Peroxidase conjugated (ASP1615) at 1/15000 dilution. Observed band size: 24KDa Blocking/Dilution buffer: 5% NFDM/TBST.



All lanes : Anti-IL6 Antibody (Center) at 1:1000 dilution Lane 1: HeLa whole cell lysate Lane 2: NCI-H460 whole cell lysate Lysates/proteins at 20 µg per lane. Secondary Goat Anti-Rabbit IgG, (H+L), Peroxidase conjugated at 1/10000 dilution. Predicted band size : 24 kDa Blocking/Dilution buffer: 5% NFDM/TBST.



IL6 Antibody (Center) (AP12474c) immunohistochemistry analysis in formalin fixed and paraffin embedded human kidney tissue followed by peroxidase conjugation of the secondary antibody and DAB staining. This data demonstrates the use of IL6 Antibody (Center) for immunohistochemistry. Clinical relevance has not been evaluated.



IL6 Antibody (Center) (Cat. #AP12474c) flow cytometric analysis of NCI-H460 cells (right histogram) compared to a negative control cell (left histogram). FITC-conjugated goat-anti-rabbit secondary antibodies were used for the analysis.

### IL6 Antibody (Center) - Background

This gene encodes a cytokine that functions in inflammation and the maturation of B cells. The protein is primarily produced at sites of acute and chronic inflammation, where it is secreted into the serum and induces a transcriptional inflammatory response through interleukin 6 receptor, alpha. The functioning of this gene is implicated in a wide variety of inflammation-associated disease states, including susceptibility to diabetes mellitus and systemic juvenile rheumatoid arthritis.

### IL6 Antibody (Center) - References

Perez, A.B., et al. Hum. Immunol. 71(11):1135-1140(2010)  
Weng, X.M., et al. Zhonghua Shi Yan He Lin Chuang Bing Du Xue Za Zhi 24(1):42-44(2010)  
Santhosh, S., et al. Trop Gastroenterol 31(1):30-33(2010)  
Gein, O.N., et al. Patol Fiziol Eksp Ter 1, 10-13 (2010) :  
Tuttolomondo, A., et al. Cardiovasc Diabetol 9, 50 (2010) :